



The PT Times

Picton Terminals

4/8/2019

Volume 16

HwyH2O is Open !

The PT Team and especially the Sheri Lynn S Crew have been busy throughout our icy winter. The opening of the St. Lawrence Seaway and the resumption of shipping across the Great Lakes is always cause for celebration. It takes a large team to help get the vessels moving. Everyone from the Coast Guard in the St. Lawrence River to the draining and refilling of the Welland Canal helps to reopen HwyH2O to shipping and commerce to 8 US states and 2 provinces which border the Seaway. The SLS Crew played a small part in the reopening of the shipping season by breaking ice at Lafarge to assist their first vessel of the season to dock safely and helping the Molly M and barge (above) get back and forth to Toronto harbour.



SLS ice breaking to support the Molly M tug and Newfoundland barge, back and forth to Toronto harbour. Photo by PT



"We are halfway to completing Dry Storage for road salt thus becoming the 1st port to create this type of storage. Others are looking to replicate our idea." Owner Ben Doornekamp

Work continues on our engineered stormwater management plan and Dry Storage Bin for road salt. Our goal is to complete construction this summer for autumn shipments of salt.



Picton Terminals is pleased to be part of the upcoming :

Manufacturing Matters Seminar

hosted by



KINGSTON ECONOMIC
Development Corporation

Learn about FedDev Ontario investments and funding streams that drive innovation and growth, and Picton Terminals, and how they can help your manufacturing business.



PT Partner Spotlight

Liebherr

www.liebherr.com

The invention of the tower crane is synonymous with the birth of the family-run Liebherr company in 1949. Within the first decade, the small construction firm developed into a manufacturer of high quality construction machinery and other technologically sophisticated products. The Liebherr Group has grown steadily throughout its 70yr history. Long-term investments, organic growth and strategic additions to the product portfolio have proved key success factors to new growth markets worldwide.

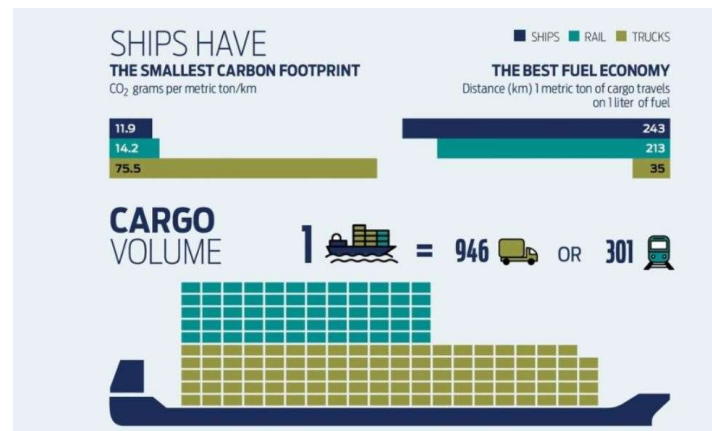
Picton Terminals is proud to own Liebherr cranes, including the new LHM 420 Mobile Harbour Crane which provides PT with flexibility in the types of services delivered at the port.



Liebherr LMH 420 mobile crane. Photo by Liebherr.

What's next @PT?

- MECP **Approved** Interim Action Plan for stormwater mgmnt is being built in phases, on PT site.
- MECP application for **Dry Storage Accepted and Under Review**.
- **Tugboat** Sheri Lynn S supports Amherst Is. Ferry dock construction.
- Partner with McKeil Marine shipping surplus limestone to Ellis Don's work @ Toronto Harbour
- Operate Station 4170 **MarineTraffic**
- Completing final stage of **berm construction**
- Preparing berm for 2000 native trees and shrubs for **May planting**
- Grinding rock for Phase 2 of the **Dry Storage bin**



Infographic by The Great Lakes St. Lawrence Seaway System Directory