



## The PT Times

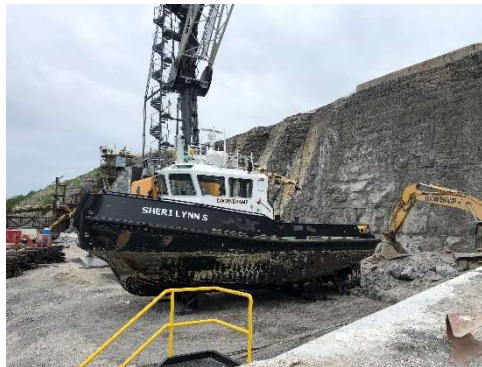
Picton Terminals

6/26/2019

Volume 17

### **Busy Start to the 2019 Shipping Season !**

High Lake levels have caused challenges across HwyH2O. We've been asked by our neighbours to accept partial loads at our docks as the high water at their docks prevents unloading of the entire shipment. Water is also high along the Mississippi River from where we've been expecting a barge since last month. The Mississippi shipping season is 3 months behind as they wait out heavy, frequent rains and the inevitable dredging that follows.



After breaking ice across the region and assisting vessels to the PT docks, the SLS was hauled out for maintenance, using our new Liebherr LHM420.

Photos by PT.

*"PT has spent time and money cleaning up the historical salt discharge, and engineering a new way to store road salt for eastern Ontario municipalities. The new Dry Storage Bin for road salt will keep rain away from road salt and prevent discharge into Picton Bay - occurring since 1982. Legal action against PT has significantly slowed construction of covered dry storage for road salt – the only storage facility of its kind on the Great Lakes. As the legal action continues into another year, I am frustrated by the time and resources wasted which could be better spent cleaning up the environment."*  
Owner Ben Doornekamp

PT is working with Transport Canada and other agencies to prepare to accept Great Lakes cruise boats - a fast growing area of the Ontario Tourism market. This requires us to increase security across all aspects of our site. We welcome visitors to enjoy ship-watching but you must contact us before arrival please.

### **Join Us to Watch the Ships!**



Algoma Conveyor May 2019

Picton Terminals is planning several 2019 Open Houses to watch the vessels arrive and offload.

Please stay tuned to the Picton Terminals Facebook page for invitations to visit our port.

**Please note:** for Safety and Security of all personnel,

**No Unauthorized Access is permitted.**

Trespassers will be prosecuted.



## Covered Dry Storage for Salt Update

Building a covered storage area to hold >120k MT of road salt, inside a 90ft high rock cliff occurs in phases, over many months/years.

Work began in summer 2018 with line drilling the perimeter of the T-shaped bin. The line drilling helps maintain the integrity of the rock walls to prevent splitting and falling rock during rock removal.

Autumn 2018 included Phase 1 Construction of an L-shaped hole in the rock cliff. Rock was removed using a Rock Grinder (a GPS controlled vehicle which removes 1ft of rock during every pass) followed by blasting. Finished Grade will be achieved using the Rock Grinder Summer 2019.

Construction of the covered Dry Storage bin has taken longer due to diverted resources from ongoing legal action against PT. Autumn 2019 salt will be stored atop the cliff, as has been the case since 1982.

The longer the legal proceedings take, the longer the Dry Storage construction will take.



DroneDeploy June 12, 2019. Photo by PT certified Drone Team.

## *What's next @PT?*

- MECP **Approved in 2018** Interim Action Plan for stormwater mgmnt, is being updated with new 2020 timelines.
- MECP application for stormwater mgmnt **Dry Storage Await MECP Approval.**
- **Tugboat Sheri Lynn S** remains ready to support Amherst Is. Ferry dock works.
- New work with Toronto and Region Conservation Authority (**TRCA**)
- Our work @ YGK Kingston airport is **complete.**
- Operate Station 4170 **Marine Traffic**
- **Planted 2000** native trees and shrubs on the berm. 2000 more to be planted 2020
- **Grinding rock** for final grade of dock road and Exfiltration Zone is underway.

## GREAT LAKES/SEAWAY ECONOMIC IMPACT



## ABOUT THE LAKES



Infographic by 2019 Great Lakes St. Lawrence Seaway Directory