



The PT Times

Picton Terminals

10/31/2018

Volume 13

Many visitors to PT !

Picton Terminals has had a busy couple of months welcoming multiple vessels to at our docks and sending the PT Team to several locations across the region.

"The PT Team will spend the winter months working on dock restoration and Dry Storage construction." PT Owner Ben Doornekamp

PT continues to provide support to Rankin Construction as they build the new Amherst Is. Ferry docks. Additionally, we made numerous trips to Kingston for the YGK Kingston Airport expansion. That work is now complete and we've resumed delivery of surplus limestone (from the PT redevelopment and Dry Storage construction) to Toronto Harbour. This work will be completed before winter freeze-up.

Unlike last winter when Picton Terminals was shipping to Toronto Harbour across an icy lake, the PT Team will spend

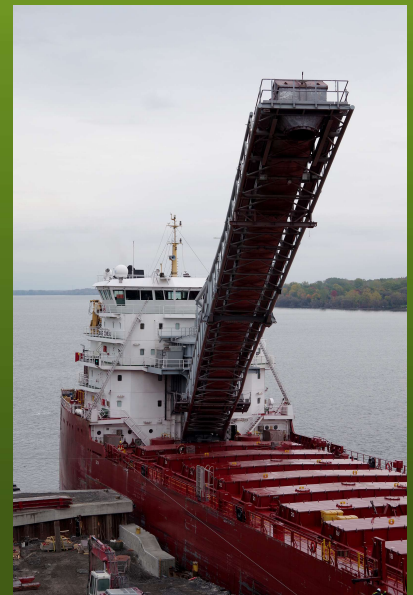


Federal Yukon self-unloading vessel. Photo by PT

this winter repairing the docks which were built in the early 1950's. The Team will also continue to build the Dry Storage 'bin' which will hold bulk materials like road salt. We are on schedule to have the Dry Storage bin completed in time for next year's salt shipments. As we build the new storage area, we are also building new and improved stormwater management ponds thus replacing the stormwater management works which were installed in 1992. Picton Terminals continues to sample stormwater across our site, and report those data to the Ministry of the Environment, Conservation and Parks.

Please watch for our new video montage of PT's projects across the region. Coming soon to Facebook and our website !

**Interested in a tour of Picton Terminals?
We are happy to share our progress with you**



Contact
sandy@doornekamp.ca

to arrange a PT tour.

Please Note- safety is our prime concern. Please adhere to all safety guidelines provided to you before arrival.



Bulk Road Salt- by the numbers

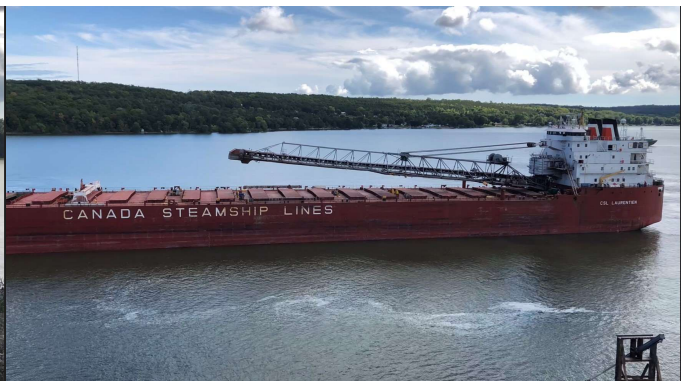
Picton Terminals is removing trucks from roads by shipping road salt from the Goderich salt mines to Supply eastern Ontario municipalities and private contractors

- 1 CSL vessel self-offloads **29,000 MT**
- Average Sept/Oct day **180MT trucked offsite**
- 1 vessel carries equivalent of **725 truckloads**.
- **65,250 km removed from regional hwy's** for one vessel (29,000 MT).
- There are 442.5 road accidents every 1B km driven in Canada. **PT is helping to keep eastern Ontario drivers safer by removing km driven on regional hwy's.**
- **18.75 MT of Green House Gases removed** by replacing traditional truck shipping with marine shipping.

What's next @PT?

- MECP **Approved** Interim Action Plan for stormwater mgmnt is being built in phases, on PT site.
- MECP application for **Dry Storage Accepted and Under Review**.
- **Tugboat Sheri Lynn S** supports Amherst Is. Ferry dock construction.
- Supply **FUSION™** products to eastern Ontario contractors and municipalities.
- Partner with McKeil Marine shipping surplus limestone to Ellis Don's work @ Toronto Harbour
- Operate Station 4170 **MarineTraffic**
- Ordered 2500 native trees and shrubs for berm planting Spring 2019
- NEW Drivers, Operators, Deckhands and Admin staff joined the PT Team
Interested to join our team? Email your resume to sandy@doornekamp.ca

CSL Laurentien visited in early September



The CSL Laurentien is a 36,674 DWT Self-Unloading Bulk Carrier built in 1979.

CSL Laurentien has 5 holds and can offload ore at 5,200 MT/hr.

CSL Laurentien offloaded a small amount of bauxite at our docks for our neighbours (delivery at PT due to low lake levels). PT trucked the bauxite a short distance to its final destination.